

WMA Emergency Closures

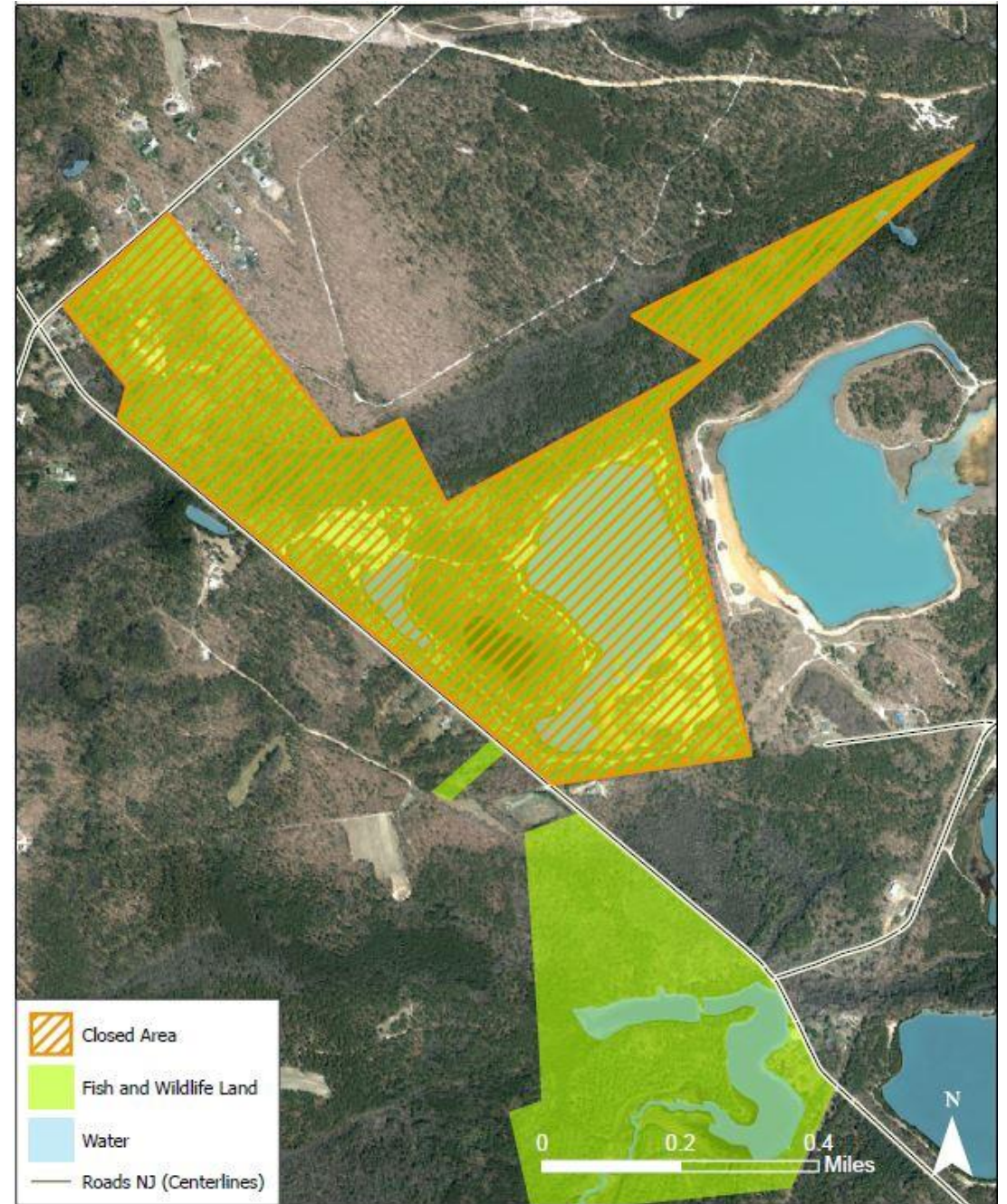
2022

WMA Emergency Closures

- May 27 through September 5, 2022
- 6 areas on 5 Wildlife Management Areas
- To address:
 - Safety of the public
 - Safety of Fish & Wildlife Staff
 - Protect the lands and waters from damage.

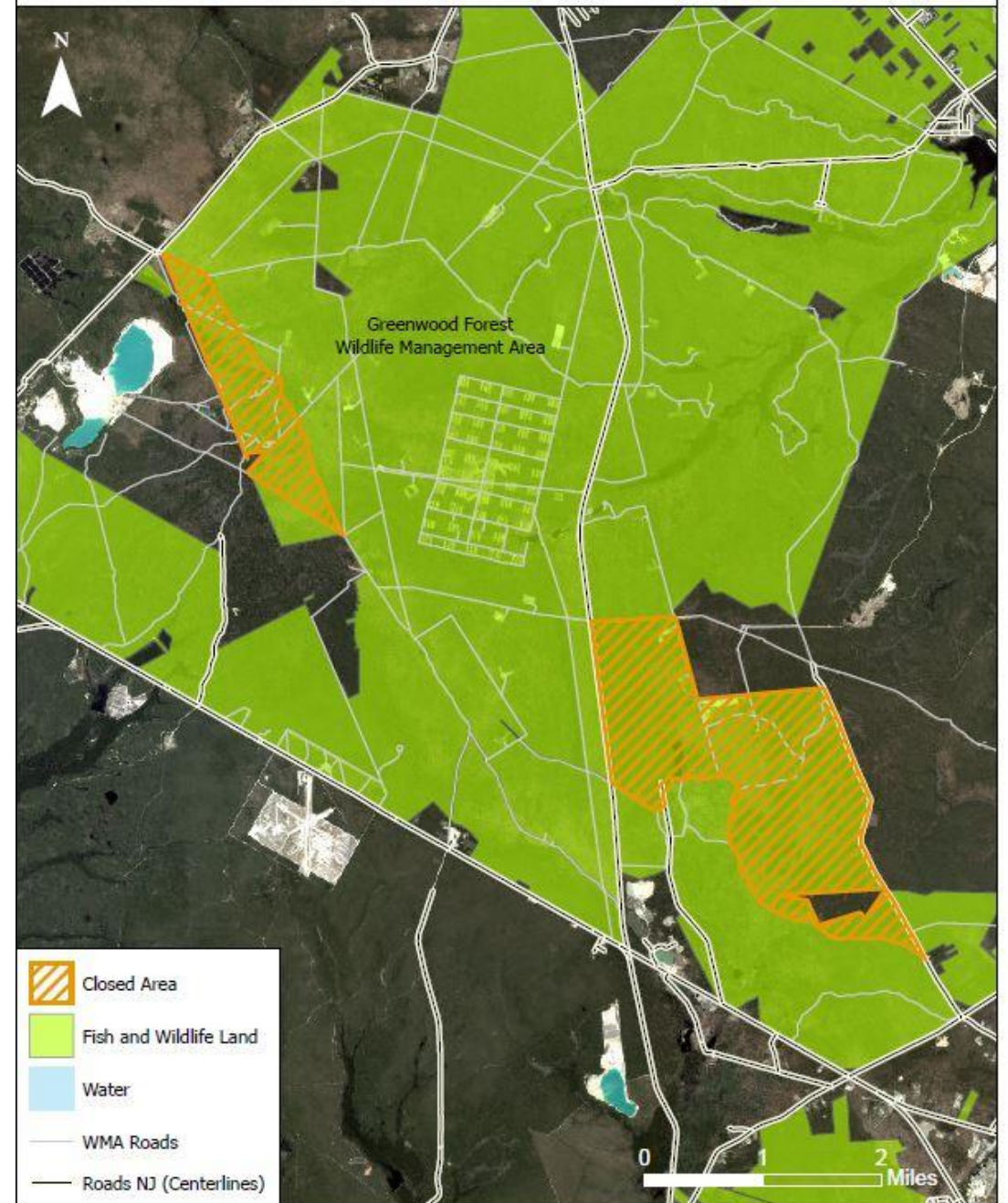
Cedar Lake WMA

- Monroe Twp., Gloucester
- “Sand Plant” area
- 387 acres total
- 229 acres closed = 59% of available acres closed



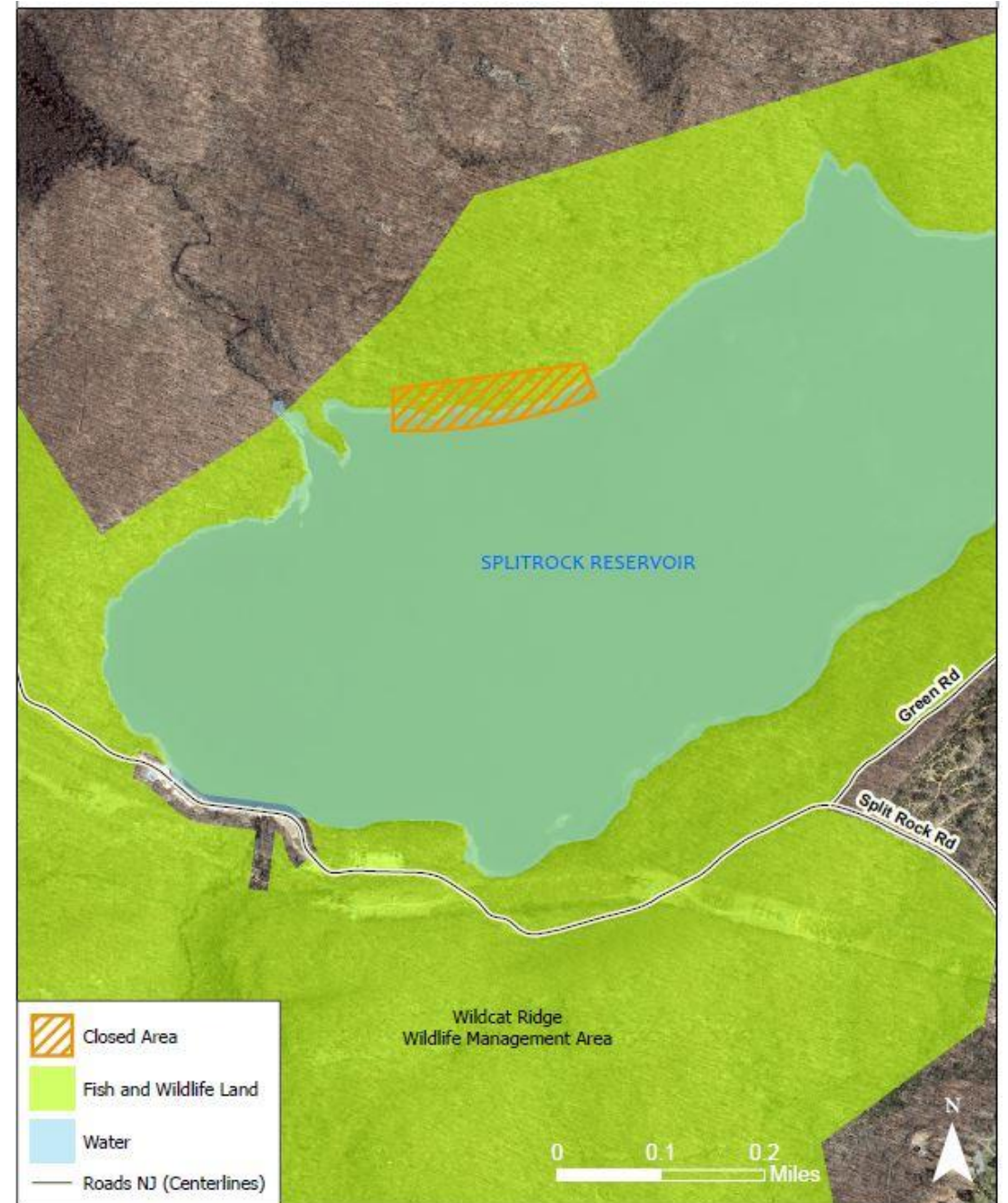
Greenwood Forest WMA

- Ocean Co.
- Parkers Pit and Clay Holes areas
- 29573 Acres Total
- 2715 Acres closed = 9% of available acres closed



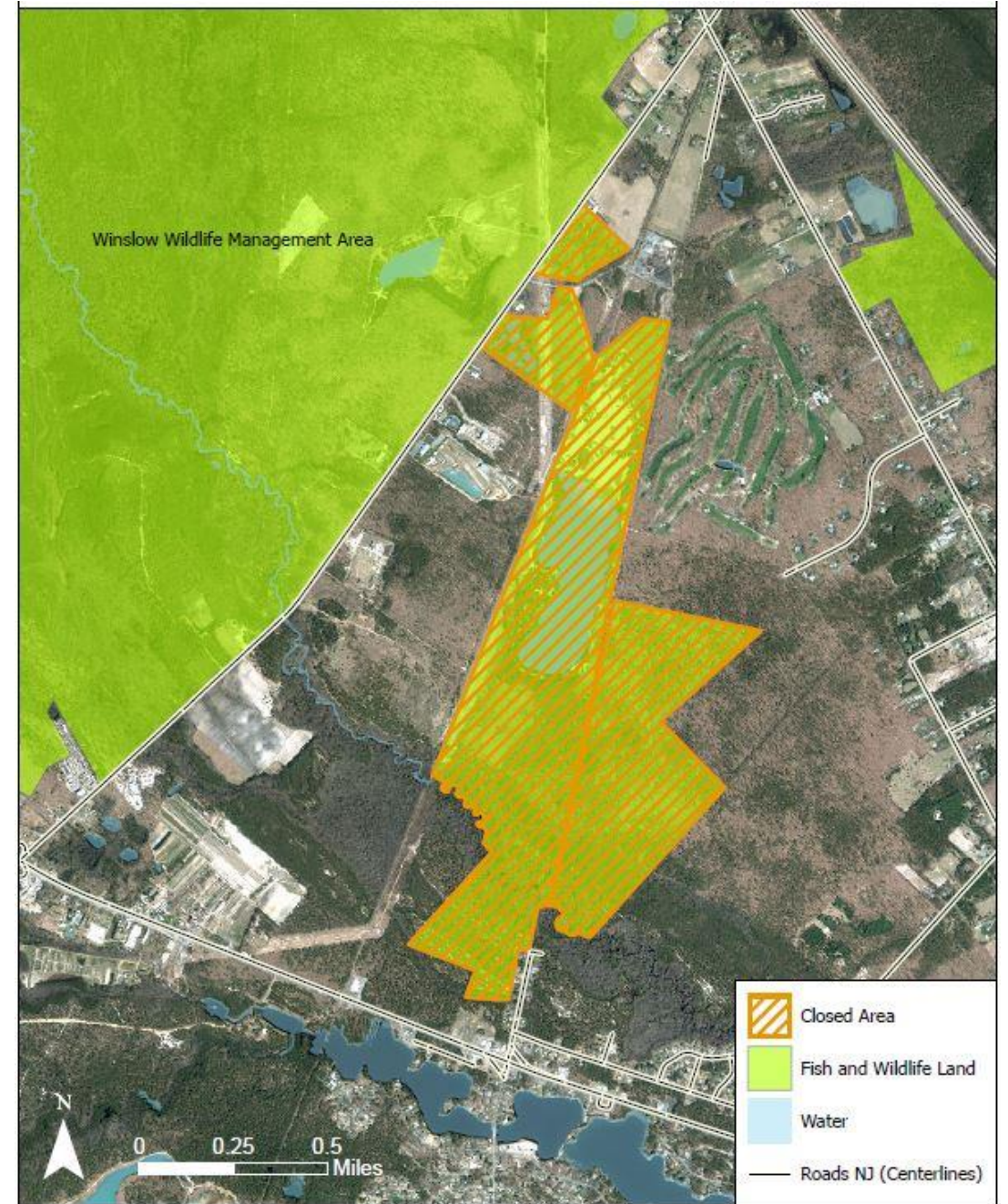
Wildcat Ridge WMA

- Rockaway Twp., Morris
- “The Cliffs” area
- 6080 acres total
- 5.3 acres closed
- .1% of available acres closed



Winslow WMA

- Winslow, Camden
- “Winslow East” or “Hot Mix”
- 8509 acres total
- 493 acres closed = 6% of available acres closed



Menantico Ponds WMA

- Millville, Cumberland
- Entire area, starting from access from Rt. 49
- 468 acres total
- 468 acres closed = 100% of available acres closed

